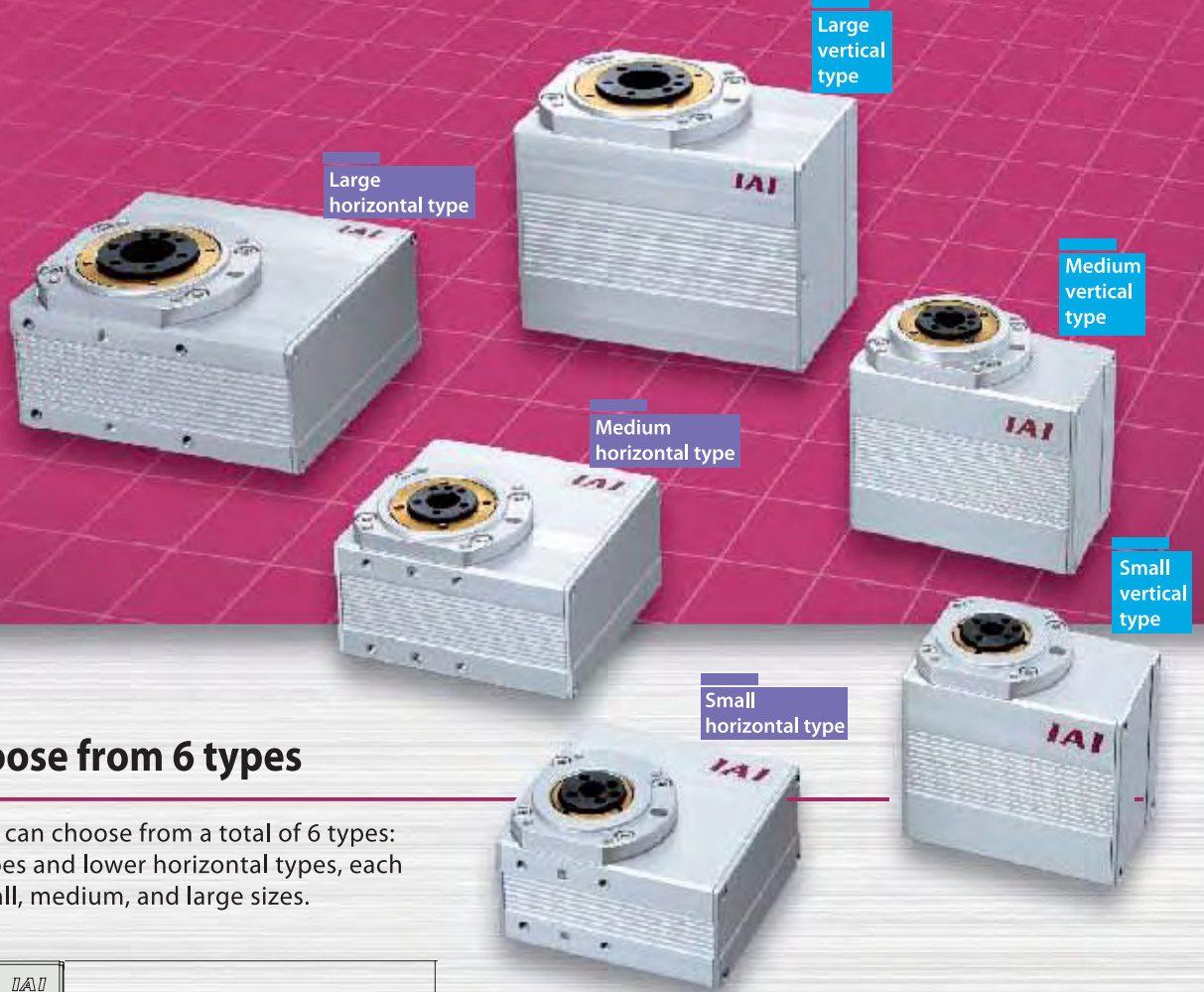


Rotary-Type Robo Cylinder

RCP2-RT

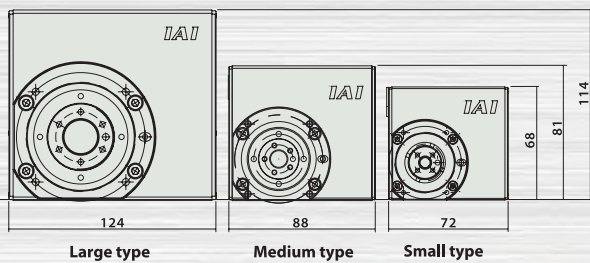


Now with the addition of the small and large types, our line-up is even stronger



1 Choose from 6 types

Now customers can choose from a total of 6 types: slim vertical types and lower horizontal types, each available in small, medium, and large sizes.



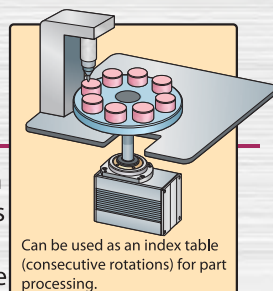
2 Hollow structure

The output axis of the horizontal type has a hollow structure, so wires from devices installed along the output axis can be passed through it.



3 Multiple rotation specifications

All models have multiple rotation specifications that allow rotations exceeding 360 degrees. They can be operated in the same rotational direction, like a conveyor (*1).



(*1) One rotation is within ± 360 degrees.

4 High-precision positioning

The output axis of the horizontal type has a hollow structure, so wires from devices installed along the output axis can be passed through it.

(*2) The small model is ± 0.05 degrees.

5 Can use up to 1500 positions

If a PSEL controller is used, up to 1500 positions can be used. (*3)

Customers can choose from the following controller types: positioner, serial communication, pulse line, electromagnetic valve, and program types.

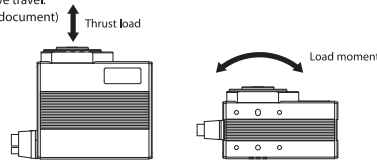
(*3) Please note that the maximum number of positions varies depending on the controller



Specifications

Type	Small				Medium				Large			
	Vertical		Horizontal		Vertical		Horizontal		Vertical		Horizontal	
Shape	RTBS (standard specifications)		RTCS (standard specifications)		RTB (standard specifications)		RTC (standard specifications)		RTBB (standard specifications)		RTCB (standard specifications)	
Type	RTBSL (multiple rotation specifications)		RTCSL (multiple rotation specifications)		RTBL (multiple rotation specifications)		RTCL (multiple rotation specifications)		RTBBL (multiple rotation specifications)		RTCBL (multiple rotation specifications)	
Speed reduction ratio	1/30	1/45	1/30	1/45	1/20	1/30	1/20	1/30	1/20	1/30	1/20	1/30
Operating range	Degrees											
Reverse rotation specifications	Standard specifications: 330 degrees. Multiple rotation specifications: ±9999 degrees (*1)											
Max. torque (*2)	Standard specifications: none. Multiple rotation specifications: yes											
Max. operating speed (*3)	N·m		N·m		N·m		N·m		N·m		N·m	
Repeat stop precision (*4)	Degrees/sec		Degrees/sec		Degrees/sec		Degrees/sec		Degrees/sec		Degrees/sec	
Backlash	Degrees		Degrees		Degrees		Degrees		Degrees		Degrees	
Allowable thrust load (*5)	N		N		N		N		N		N	
Allowable load moment (*5)	N·m		N·m		N·m		N·m		N·m		N·m	
Detection method	Electromagnetic encoder (incremental)											
Origin point detection method	Standard specifications: mechanical stopper method. Multiple rotation specifications: proximity sensor method											
Precision to restore to the original point	Degrees		Degrees		Degrees		Degrees		Degrees		Degrees	
Usage environment	Temperature: 0-40°C, Humidity: 20-85% RH or less (no condensation)											
Outer dimensions of main unit (thickness x width x height)	mm		mm		mm		mm		mm		mm	
Mass of main unit	kg		kg		kg		kg		kg		kg	
Motor cable type	CB-PCS-MPA□□□□				CB-RCP2-MA□□□□ * The standard motor cable is a robot cable.							
Encoder cable type	(Cable with motor and encoder in one)				CB-RCP2-PB□□□□ (CB-RCP2-PB-RB) (*1)							

- (*1) Multiple rotation specifications: in normal mode, it is possible to move up to ±9999 degrees of consecutive travel.
 (*2) Maximum torque changes depending on the speed. (See the front and back sides of the model selection document)
 (*3) The maximum speed changes depending on the load.
 (*4) Shows the repeat positioning precision from one direction.
 (*5) If loads exceeding these values are used, it may cause damage or shorten the lifespan of the unit. (See the diagram on the right for the direction of force)
 (*6) Robot cable types are inside ().



Type criteria

□ Type categories

Series	Type	Encoder type	Motor type	Speed reduction ratio	Vibration angle	Applicable controller	Cable length	Options
RCP2	RTBS : Small vertical standard RTBSL : Small vertical multiple rotation RTCS : Small horizontal standard RTCSL : Small horizontal multiple rotation RTB : Medium vertical standard RTBL : Medium vertical multiple rotation RTC : Medium horizontal standard RTCL : Medium horizontal multiple rotation RTBB : Large vertical standard RTBBL : Large vertical multiple rotation RTCB : Large horizontal standard RTCBL : Large horizontal multiple rotation	Incremental	20P: Pulse motor 20 size 28P: Pulse motor 28 size 35P: Pulse motor 35 size	20: Speed reduction ratio 1/20 30: Speed reduction ratio 1/30 45: Speed reduction ratio 1/45	330: 330 degrees 360: 360 degrees (Multiple rotation)	P1: PCON PSEL	N: None P: 1 m S: 3 m M: 5 m	SA: Shaft adapter TA: Table adapter

Type

Type	Type	Type	
Small	Vertical	Standard specifications	RCP2-RTBS-I-20P-30(45)-330-P1
		Multiple rotation specifications	RCP2-RTBSL-I-20P-30(45)-360-P1
	Horizontal	Standard specifications	RCP2-RTCS-I-20P-30(45)-330-P1
		Multiple rotation specifications	RCP2-RTCSL-I-20P-30(45)-360-P1
Medium	Vertical	Standard specifications	RCP2-RTB-I-28P-20(30)-330-P1
		Multiple rotation specifications	RCP2-RTBL-I-28P-20(30)-360-P1
	Horizontal	Standard specifications	RCP2-RTC-I-28P-20(30)-330-P1
		Multiple rotation specifications	RCP2-RTCL-I-28P-20(30)-360-P1
Large	Vertical	Standard specifications	RCP2-RTBB-I-35P-20(30)-330-P1
		Multiple rotation specifications	RCP2-RTBBL-I-35P-20(30)-360-P1
	Horizontal	Standard specifications	RCP2-RTCB-I-35P-20(30)-330-P1
		Multiple rotation specifications	RCP2-RTCBL-I-35P-20(30)-360-P1

Cable Length

Type	Type
Standard type	P (1m)
	S (3m)
	M (5m)
Special lengths	X06 (6m) -X10 (10m)
	X11 (11m) -X15 (15m)
	X16 (16m) -X20 (20m)
Robot cable	R01 (1m) -R03 (3m)
	R04 (4m) -R05 (5m)
	R06 (6m) -R10 (10m)
	R11 (11m) -R15 (15m)
	R16 (16m) -R20 (20m)

Options

Name	Option Symbol
Reverse rotation specifications	NM
Shaft adapter	SA
Table adapter	TA

*Option pricing is the same for small, medium, and large types.

Applicable Controller

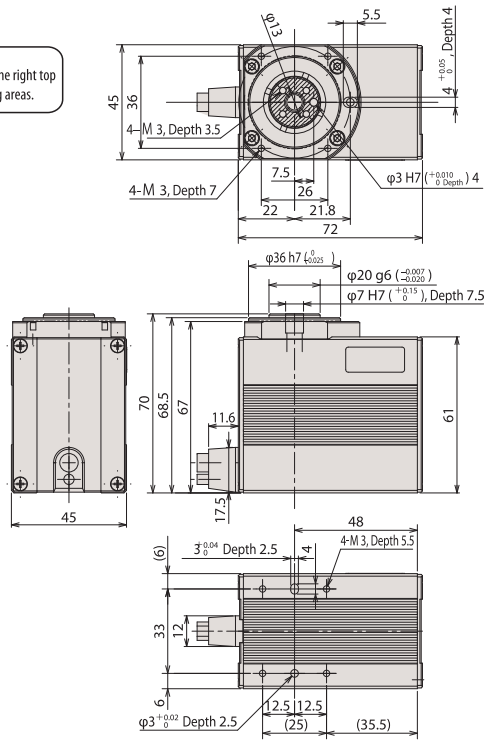
Name	Type
Positioner type	PCON-C-□I-NP-2-0
Safety category compatible type	PCON-CG-□I-NP-2-0
Electromagnetic valve type	PCON-CY-□I-NP-2-0
Pulse line type (differential)	PCON-PL-□I-NP-2-0
Pulse line type (open collector)	PCON-PO-□I-NP-2-0
Serial type	PCON-SE-□I-N-0-0
Field network type	RPCON-□
Program control type	PSEL-C-1-□I-NP-2-0

* The □ in the above model designations denote numbers representing the motor of the main rotary unit.
 Example: When operating a large type: PCON-C-35PI-NP-2-0

Small vertical type



Note:
* The diagonal lines on the right top view show the rotating areas.



CAD drawing can be downloaded from the website. www.intelligentactuator.com



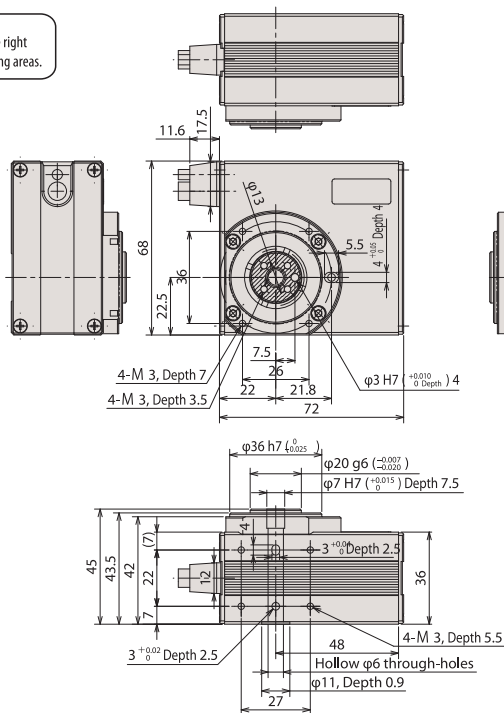
Note:
The position on the left top view is the origin point position. When going back to the origin point, the unit rotates from the current position to a position 1 degree to the left, so be careful of interference in the surrounding area. The operating range is 330 degrees rotating to the right, looking from the top.

Mass (kg)	0.52
-----------	------

Small horizontal type



Note:
The diagonal lines on the right top view show the rotating areas.



CAD drawing can be downloaded from the website. www.intelligentactuator.com



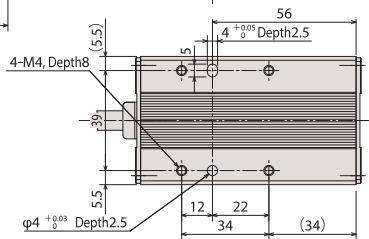
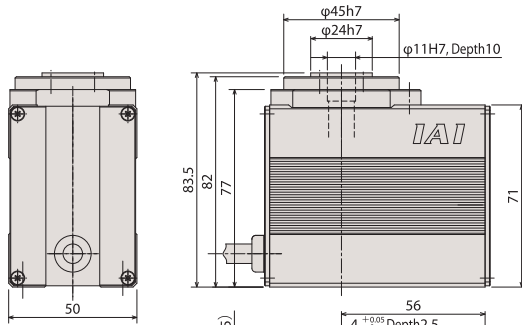
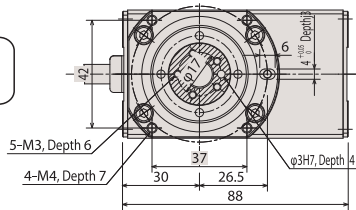
Note:
The position on the left top view is the origin point position. * When going back to the origin point, the unit rotates from the current position to a position 1 degree to the left, so be careful of interference in the surrounding area. * The operating range is 330 degrees rotating to the right, looking from the top.

Mass (kg)	0.48
-----------	------

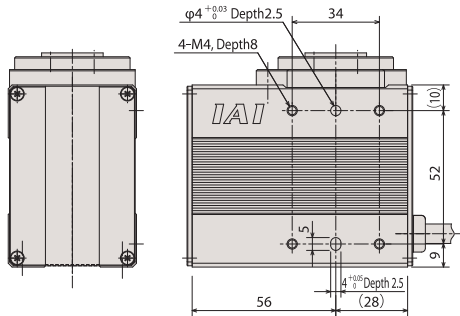
Medium vertical type



Note:
* The diagonal lines on the right top view show the rotating areas.



CAD drawing can be downloaded from the website. www.intelligentactuator.com



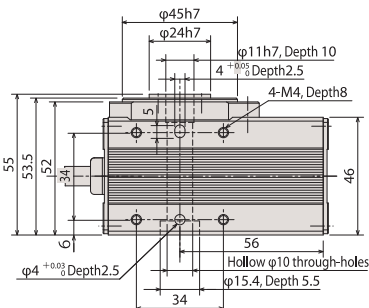
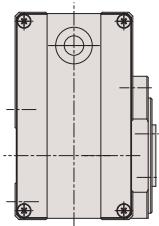
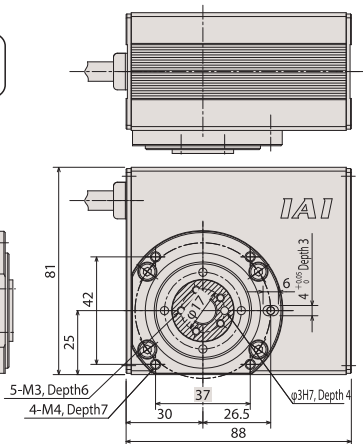
Note:
The position on the left top view is the origin point position.
* When going back to the origin point, the unit rotates from the current position to a position 1 degree to the left, so be careful of interference in the surrounding area.
* The operating range is 330 degrees rotating to the right, looking from the top.

Mass (kg)	0.86
-----------	------

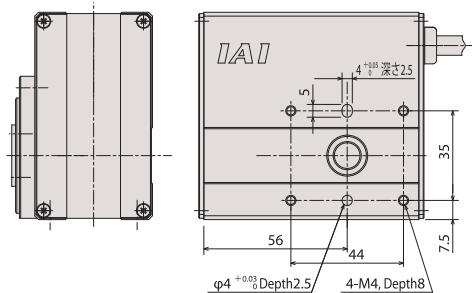
Medium horizontal type



Note:
The diagonal lines on the right top view show the rotating areas.



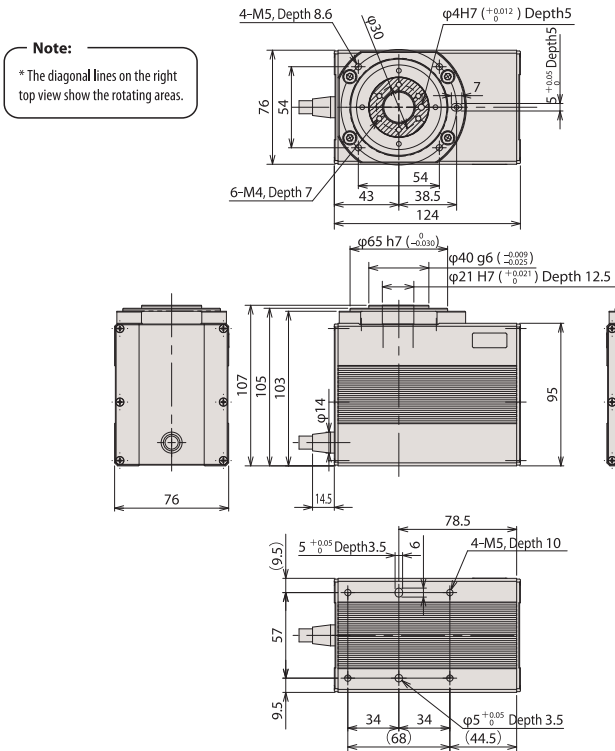
CAD drawing can be downloaded from the website. www.intelligentactuator.com



Note:
The position on the left top view is the origin point position.
* When going back to the origin point, the unit rotates from the current position to a position 1 degree to the left, so be careful of interference in the surrounding area.
* The operating range is 330 degrees rotating to the right, looking from the top.

Mass (kg)	0.92
-----------	------

Large vertical type



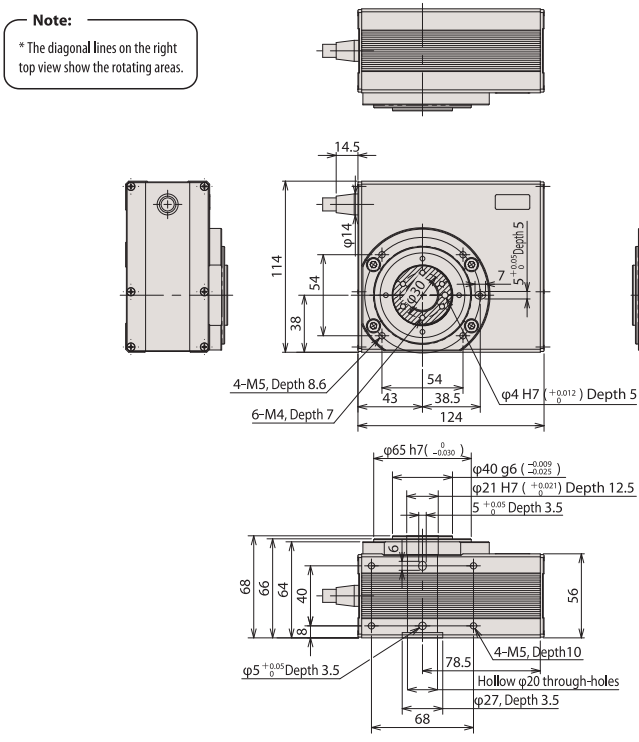
CAD drawing can be downloaded from the website. www.intelligentactuator.com



Note:
The position on the left top view is the origin point position.
* When going back to the origin point, the unit rotates from the current position to a position 1 degree to the left, so be careful of interference in the surrounding area.
* The operating range is 330 degrees rotating to the right, looking from the top.

Mass (kg)	2.3
-----------	-----

Large horizontal type



CAD drawing can be downloaded from the website. www.intelligentactuator.com



Note:
The position on the left top view is the origin point position.
* When going back to the origin point, the unit rotates from the current position to a position 1 degree to the left, so be careful of interference in the surrounding area.
* The operating range is 330 degrees rotating to the right, looking from the top.

Mass (kg)	2.2
-----------	-----

Options

Shaft adapter

□ Model SA

This is a shaft-shaped adapter for attaching jigs, etc. to the rotating areas of the rotary type unit.

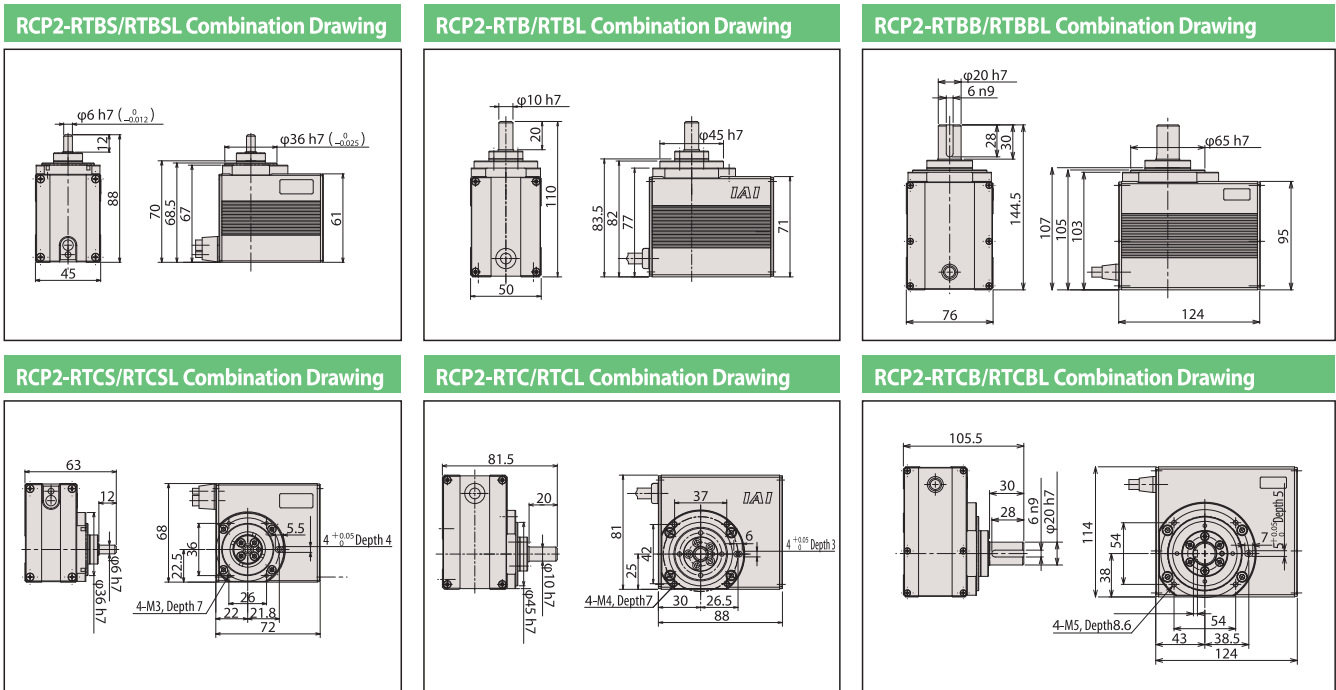


Table adapter

□ Model TA

This is a table-shaped adapter for attaching jigs, etc. to the rotating areas of the rotary-type unit.

